



INDOFINE Chemical Company, Inc.

121 Stryker Lane, Bldg. 30
Hillsborough, NJ 08844 USA
Phone: (908) 359-6778; Fax: (908) 359-1179

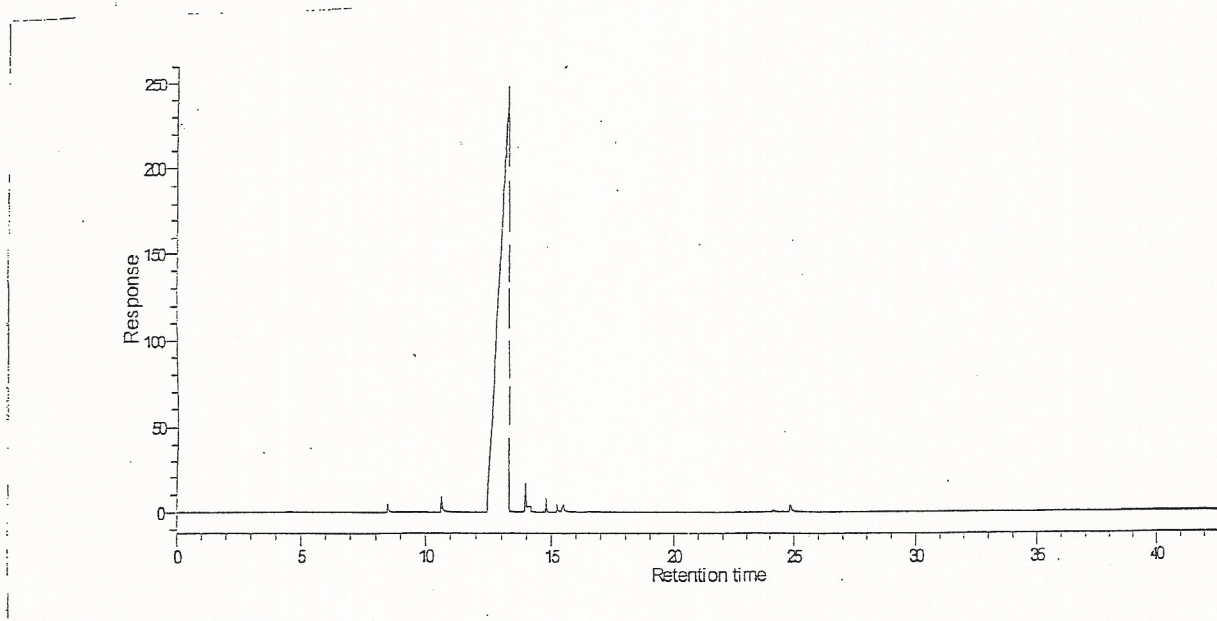
ANALYTICAL CONDITIONS

GC ANALYSIS

2-Phenylethanol

026140S Batch: 19

COLUMN 33 m OV1 0.25mm 0.5 μ m
TEMPERATURE Column : 60 to 105°C (5°C/min)
 then 105°C to 250°C (10°C/min)
 then isotherm 20min at 250°C
DETECTOR FID
CARRIER GAS N₂ 1.1 bar



RT	AREA	% AREA
8,49	15,57	0,23
10,65	32,53	0,48
13,31	6553,97	97,05
13,97	76,63	1,13
14,79	21,31	0,32
15,23	12,02	0,18
15,51	18,31	0,27
24,8	23,07	0,34